

SAHYADRI ELECTRO CONTROLS (I) PVT. LTD.


SECO



ANNUNCIATOR – ELECTROMECHANICAL (TYPE: EM101)


10, VINAY COMPLEX, 1ST CROSS, RAJGOPAL NAGAR MAIN ROAD, GANAPATHI NAGAR,
PEENYA III PHASE, BANGALORE – INDIA - 560058

Mail: mkt@secoindia.co.in & sales@secoindia.co.in, Web: www.secoindia.co.in



SAHYADRI (SECO) Make Alarm Annunciator –Electromechanical type – EM101 is designed with Electromechanical Relays and all necessary working functions of window flashing, Accept & Reset with additional Electronic circuits. This is a field proven model for all types of fields and environmental conditions. This model is Type tested for all EMI, EMC tests, Temperature rise and Cold test at a NABL accredited Govt. Lab. This type Annunciator is approved and used in Karnataka Power Transmission corporation and ESCOMs.

FEATURES:-

- Reliable Electromechanical Relays used
 - Available from 5, 10, 12, 18, 24 and up to 120 windows
 - Low power consumption
 - Long life super bright SMD LED used for windows illumination
 - with multi-colour selection
 - Wide range AC/ DC Aux. supply
 - Standby power supply
 - DC supervision & fail Indication with contacts
 - AC fail Indication with contacts
 - Contacts for external Alarms
 - Field selectable Window colour
 - Field selectable Trip & Non trip
 - Provision for External Push buttons for Test, lamp test, Accept & Reset
 - Potential free input contacts
 - Two sets of potential free normally open contacts for Audible Alarms(T & NT)
 - AUX supply indication LED
 - Shock proof shrouded terminals
 - Metal Box
 - Low depth
- 

TECHNICAL SPECIFICATION:-

- **Windows available :-** 12, 18, 24, 28, 30, 32, 35, 40, 45, 50, 55, 60, 65, 70, 75, 80, 85, 90, 95, 100, 110, 120 windows
- **Aux. supply:** 1) 10 to 18 V DC 2) 20 to 150V DC 3) 75 to 275V AC/DC
- **Window illumination:** Ultra high bright SMD LED
- **Window Colour:** All Red, Red/ Yellow, Red/ White – site selectable (other colours are optional)
- **Window size:** 30 x 70 mm
- **Window Flash rate:** 100 flashes per minute
- **Window Legend(Inscription):** Tracing sheet print or Photo negative
- **Power consumption :** 2W per window
- **Field input:** potential free protective relay Normally open contact (with potential is optional)
- **Input interrogation Voltage:** -12V DC(from the unit) – No external voltage required
- **Input Field contacts:** Normally open contact (site selectable NO/NC selection is optional)
- **Input Isolation:** Through Relays
- **Response Time:** 20 mSec (other response time is upon request)
- **Sequence of operation:** Normal/ Manual Mode
- **Output Contact:** 1 NO contact for Trip Alarm, 1 NO contact for Non Trip Alarm
1 NO contact for DC fail alarm & 1 NO contact for AC Fail (Optional feature)
- **Output contact Rating:** 10A@30V DC/ 230V AC resistive load (make & carry)
- **Push buttons:** Test, lamp test, Accept & Reset Push buttons terminals provided
for external PB's
- **Enclosure:** Metal Box
- **Protection:** Front: IP54 , Back: IP20

ADDITIONAL FEATURES / OPTIONAL FEATURES

- **Standby power supply:** 230V AC - 45 to 55 Hz (it can withstand and work up to 75 to 350V AC)
- **DC Fail Indication:** Last window flashing with 1NO potential free contact for Alarm
(Any specific window no. is upon request)
- **AC Fail Indication:** Last but one window Flashing with Non trip contact for Alarm
(separate contact for Alarm upon request)
- **Built in Event Logger contact:** 1 NO Potential free contact per window will be given
for SCADA application

Sequence of operation – Working Mode

MANUAL/ NORMAL MODE:-

CONDITION	MANUAL ACTION	WINDOW STATUS	ALARM CONTACT STATUS
NORMAL		OFF	OPEN
ABNORMAL		FLASHING	CLOSED
	ACCEPT	STEADY ON	OPEN
ABNORMAL	RESET	FLASHING	CLOSED
NORMAL BEFORE RESET	RESET	OFF	OPEN
NORMAL	TEST	FLASHING	CLOSED

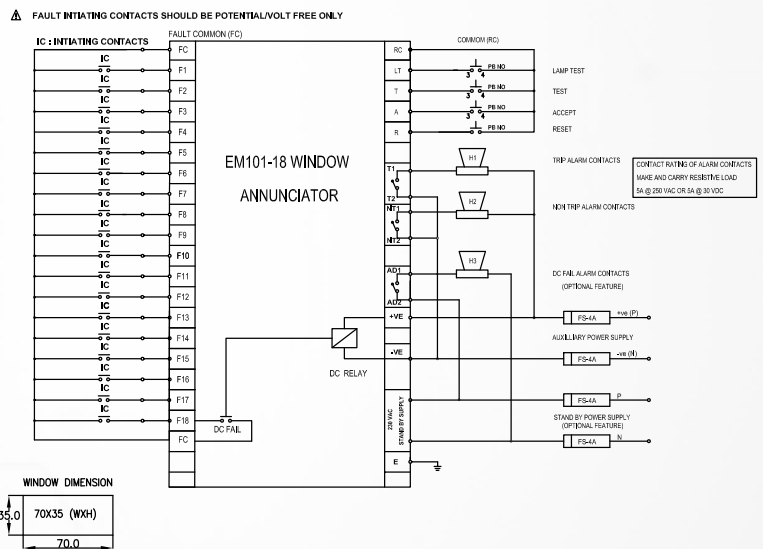
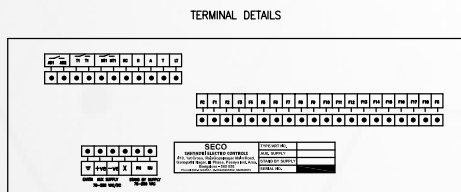
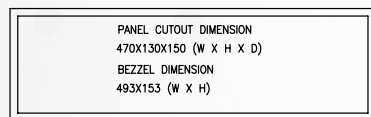
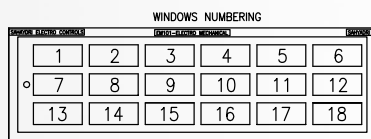
PANEL CUTOUT DETAILS

BIG WINDOWS size – 35 X 70 mm			
NO. OF WINDOWS	ROW X COLUMN	PANEL CUTOUT	FRONT BEZZEL SIZE
12	2R x 6C	470 (W) x 130 (H) mm	496(W) x 156 (H)
18	3R x 6C	470 (W) x 130 (H) mm	496(W) x 156 (H)
24	4R x 6C	470 (W) x160 (H) mm	496(W) x 186(H)

Standard Compliance :-

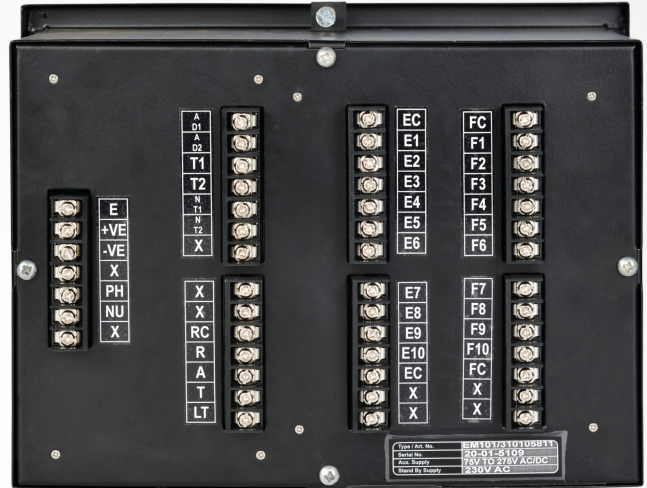
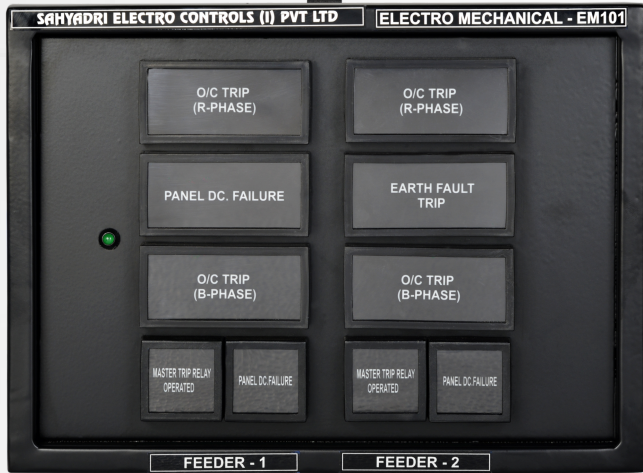
- **Initiation Test:** As per Manufacturer spec.
- **Burden test:** As per Manufacturer spec.
- **Dielectric Test :** As per IS 3231
- **Aux. supply Variation Test:** As per Manufacturer Spec.

WIRING AND PANEL CUTOUT DRAWING



ALL DIMENSIONS ARE IN MM.

DRAWN BY	HSV	REV. NO.	0	ISSUED ON	06.02.09		DRAWING TITLE: WIRING AND TERMINAL DETAILS EM101 ELECTRO MECHANICAL	DRG NO.	SH.NO	01	SECO
APPD. BY	HSV			DRWAN ON	20.06.07		18 WINDOWS ANNUNCIATOR WITH STAND BY SUPPLY AND BULTIN DC FAIL FEATURE	SECO/WD/31018581	CONTD.	-	



SAHYADRI®

ISO 9001:2015 Certified



No 10, Vinay Complex, 1st Cross, Rajgopal nagar Main Road,
Ganapati Nagar, Peenya 3rd Phase,
Bangalore-560058

080-4149 2637 / +91 9035048537 / +91 9448408537 / +91 9980544028

After Sales / Service : +91 9606040824

mkt@secoindia.co.in / sales@secoindia.co.in / manjunatha@secoindia.co.in